



www.nb-jiulong.com

NINGBO JIULONG INTERNATIONAL CO.,LTD

HOW TO DEVELOP THE COMPANY CONTINUITY?

-since 1989-2009-2019-2049-2100

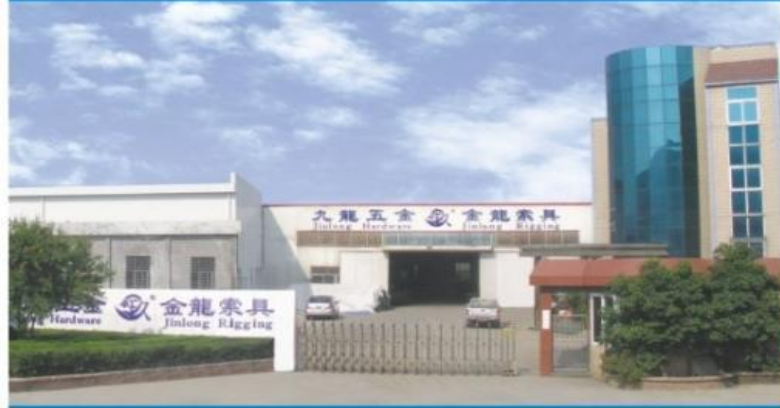
www.nb-jiulong.com



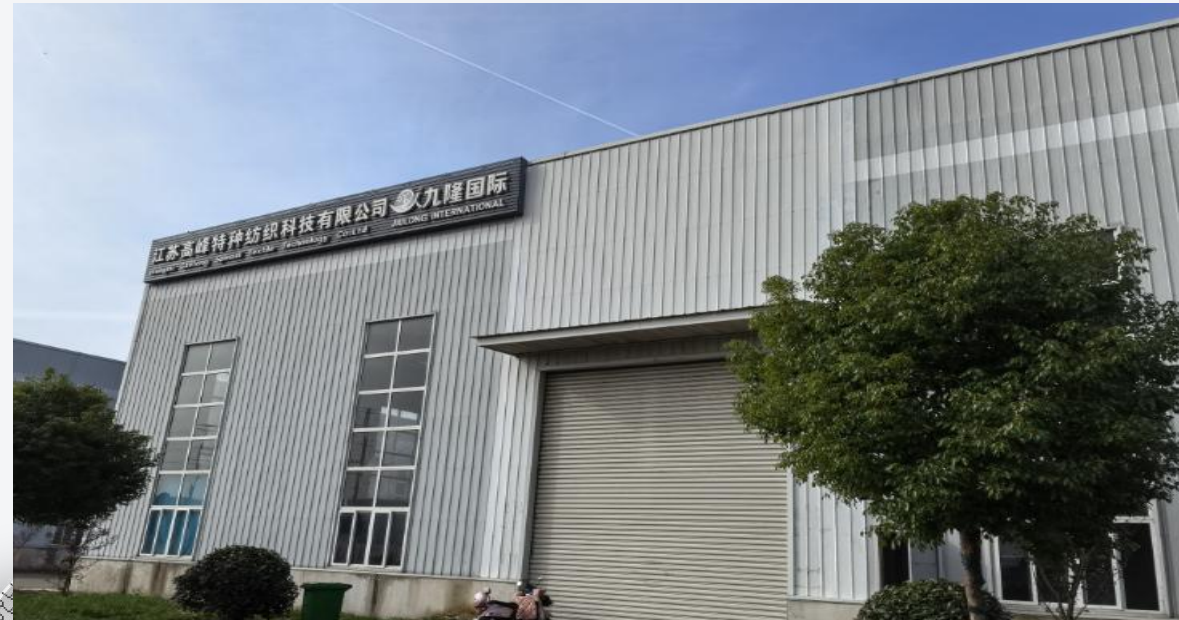
Welcome to Ningbo Jiulong



Manufacturing Centre
& Distribution Centre
(66,000m²)



Manufacturing Centre
(44,000m²)



WHY CHINA?

- ◆ Lowest total acquisition cost in the world
- ◆ High quality standards and service levels
- ◆ Dedicated well educated labor force
- ◆ Immense capacity capabilities
- ◆ Developed logistics and export infrastructure
- ◆ Stable economy and progressive Government

Why Ningbo Jiulong?

- ◆ Best quality in the industry
- ◆ Progressive ownership and management
- ◆ History of performance and on time delivery
- ◆ Strong investment in engineering to provide VA/VE analysis
- ◆ AAA credit rating and access to capital allows us to grow commensurate with the demands of your business
- ◆ ISO-9001 & ISO-14001 ;WCA,GS; CT-PAT certified

OUR VALUE



CUSTOMER FIRST , WE ARE FAMILY

PARTNER IS IMPORTANT ,TEAM
COOPERATION,HAPPNESS AND SADNESS
TOGETER

HONESTY IS THE BEST POLICY

PROFESSIONAL ETHICS

PASSION OPTIMISTIC NEVER SAY GIVE UP

ENJOY THE CHANGE,INNOVATION
CHALLENGE

ALWAYS KEEP OUR DREAM



OUR MISSION



TO RAISE AWARENESE OF SOCIAL
SECURITY SENCE.

CHANGE THE HUMAN LIFE STYLE.

MISSION STATEMENT

CREAT THE SOCITY VALUE, DELIGHT THE CUSTOMER,
DELIGHT THE STAFF, DELIGHT THE PARTNER, MAKE
THE LIFTING & LASHING MORE SIMPLE, MORE SAFETY,
MORE POPULAR,

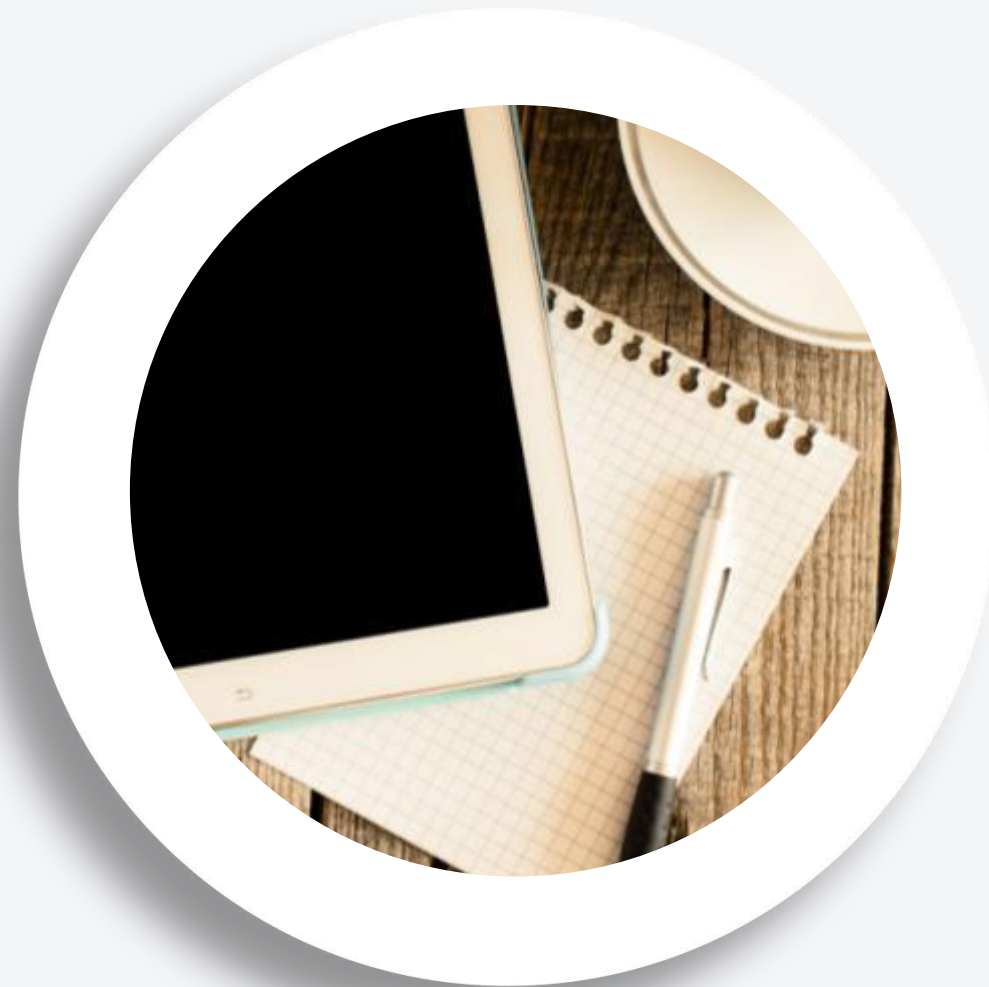


OUR VISION

TO BE NO.1 IN LASHING & LIFTING ,TO BE THE WORLD'S LEADING EXPERT IN THE SAFETY OF CARGO TRANSPORTATION SOLUTIONS, TO CONTRIBUTE TO THE SAFETY OF THE CHINESE DREAM.

DEVELOP NEW PRODUCTS TO MAKE THE CARGO LIFTING & LASHING MORE SIMPLE, MORE SAFETY, MORE POPULAR.

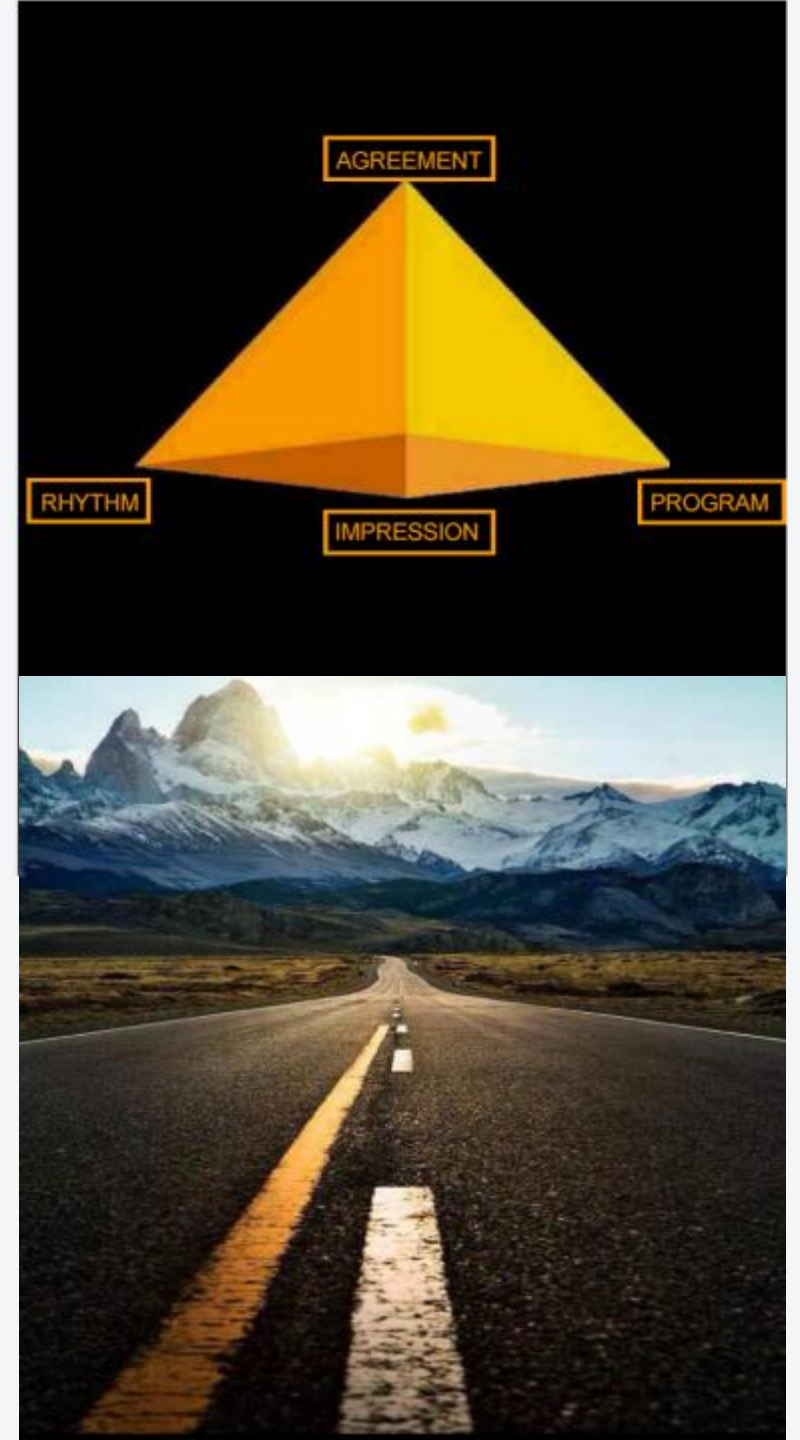
ALWAYS CULTIVATE THE BRILLIANT AND GRATITUDE TALENTS,
TO MAKE OUR SOCIETY WITH LOVE AND POSITIVE ENERGY.



OUR DREAM

BRING PEOPLE HAPPINESS, SAFETY & TRUST BASE
ON OUR LIFTING & LASHING PRODUCT

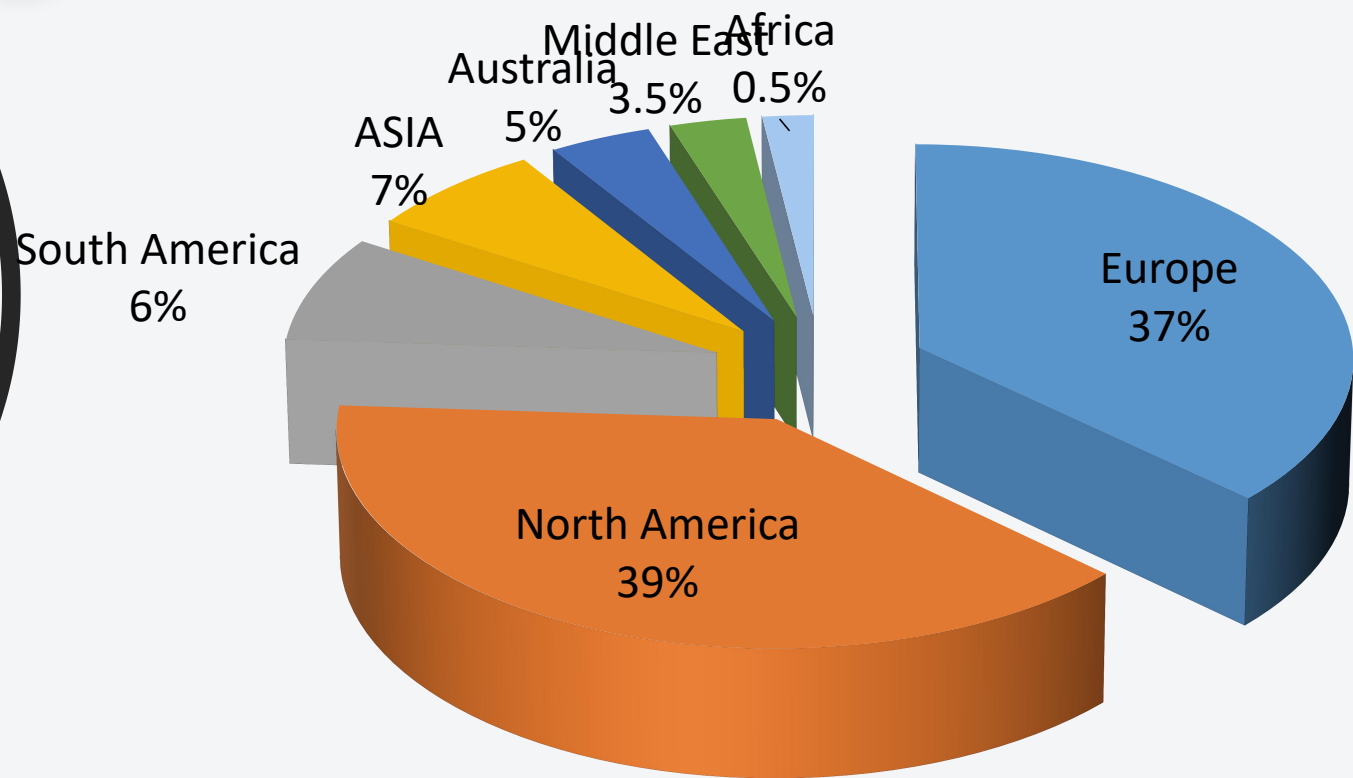
USE OUR PLATFORM TO MAKE ALL OF OUR
STAFF'S PERSONAL DREAM COME TRUE



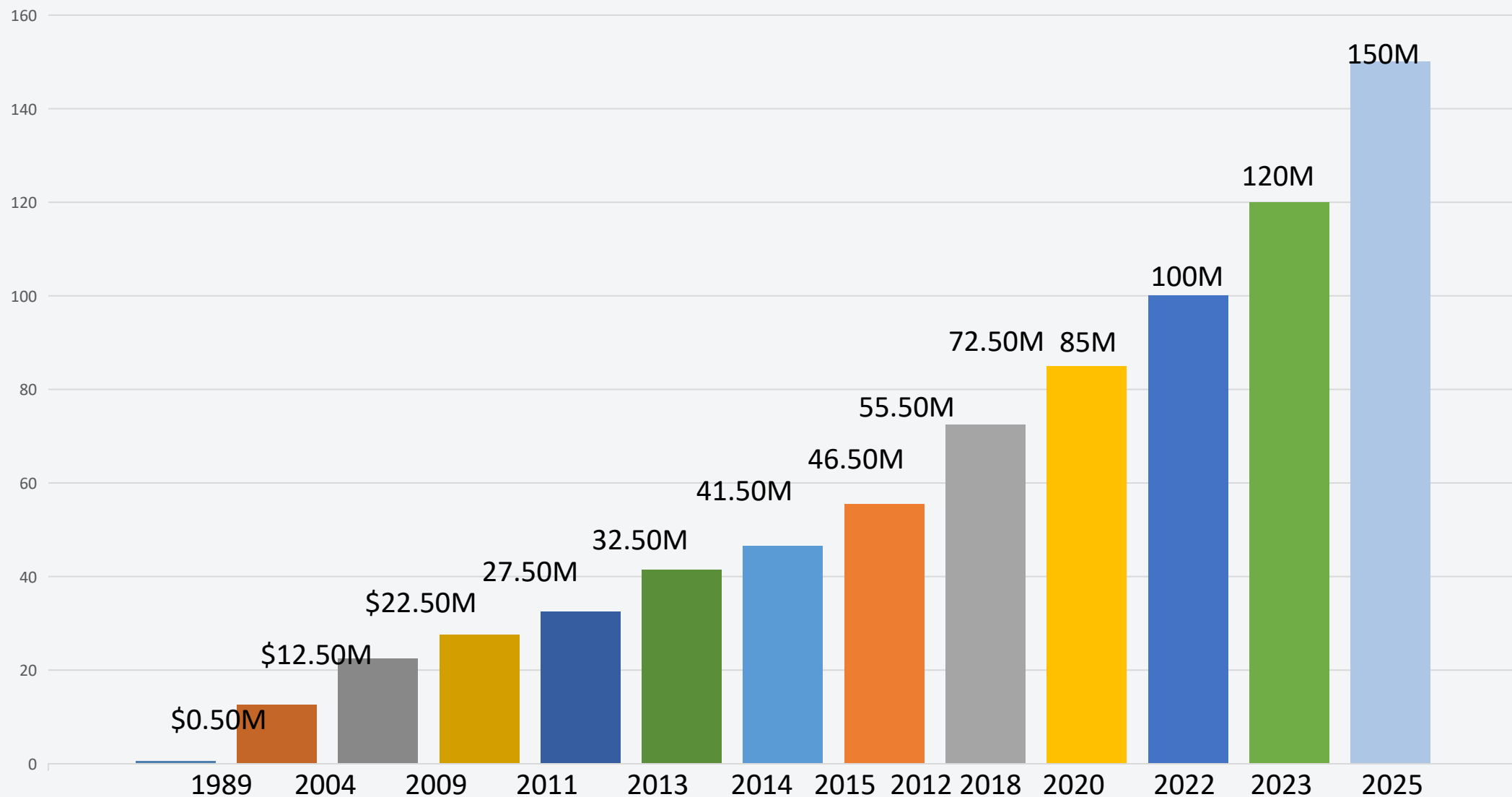
ENVIRONMENTAL MANAGEMENT SYSTEM CERTIFICATE	
Registration No. Q35D21SEZ02044R2M	
This is to certify that the environmental management system of Ningbo Jialong Hardware Co., Ltd. No. 33, Technology Street, Ninghai county, 315600 Serial Credit Code: Y13302265706489067	
is in conformity with GB/T 24001-2016 / ISO 14001:2015 Standard	
This certificate is valid to: Design, Manufacturing and Service of Hardware Parts for Kitchen, Bar, Basket, Fastening Gear, Auto Parts (except Fastener), Electropneumatic Process of Auto Parts (Pump) (Site General, No. 33, Technology Street, Ninghai county, Ninghai city, Zhejiang Province).	
Date of issue: September 06, 2018 Date of expiry at most: September 06, 2021	<p>XINZHONG GUOJIA TONU CENTRE CO., LTD. CHINA ENVIRONMENTAL MANAGEMENT SYSTEM CERTIFICATION CENTER Beijing 100088 CHINA Tel: +86-10-59562066</p>
Representative: <i>Huang Jingxian</i>	
 INTERNATIONAL ASSOCIATION OF IAS FOR STANDARDIZATION	 CHINA NATIONAL ACCREDITED MANAGEMENT SYSTEMS CERTIFICATION BODY CNAS C035-W
NOTE: This certificate must be maintained by regular surveillance audit. The validity of the certification can be confirmed by reviewing SUR notes. These information of our certificate can be available in http://china.cnas.com.cn/ . For further info about CNAS, please visit website http://china.cnas.com.cn/en/ .	



CUSTOMER DISTRIBUTION



SALES START FROM 1989(1Million USD)



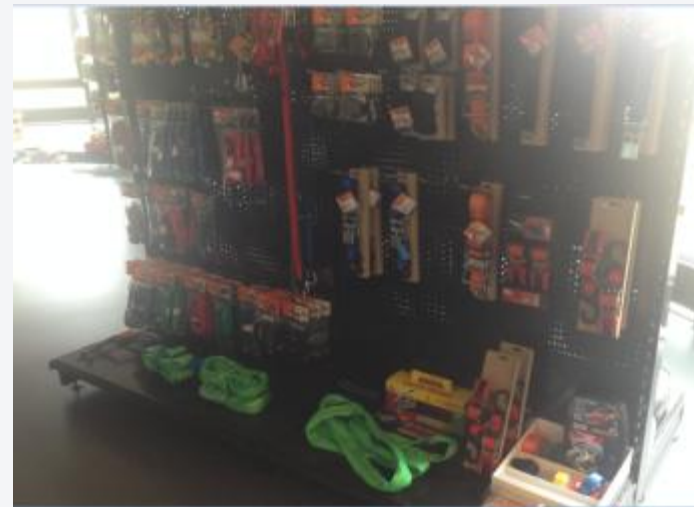
COMPANY PROJECT

Cargo Control



Trailer & Truck parts

Lifting solution



Safety Product

BUSINESS RANGE

trailer & truck
parts



Industrial



Transportation



Logistic Ports



OUR PARTNER

Asia



CIMC 中集

J&L

Europe

HENSSGEN
fastening systems



VERNON
DEVELOPMENTS LTD

forankra
ABT AB

PMS
INDUSTRIE

pewag

STRONG
IS NOT
ENOUGH
www.pewag.com

LEVAC
ACCESSOIRES DE LEVAGE
ET DE MANUTENTION

WISTRA
CARGO CONTROL

Autos
www.autos.com.pl

Unitex Group



All you need. With love.

WK kleinsorge

America

ANCRA
INTERNATIONAL

PCC
PACIFIC CARGO CONTROL, INC.

DIREGO

ACP
HEAVY DUTY PARTS

KINEDYNE
The Cargo Control People!

MENARDS

FleetPride
HEAVY DUTY PARTS & SERVICE

GRIP
GRAND RAPIDS INDUSTRIAL PRODUCTS

DG

USCC
US CARGO CONTROL

NAPA
AUTO PARTS

TSC TRACTOR
SUPPLY CO.

LOWE'S
Home Improvement Hardware

MYTEE
PRODUCTS

BOXER

Australia



HEATLEYS
SAFETY & INDUSTRIAL

AUSTLIFT

BEAVER

SILVERBACK

McNAUGHTANS

Tauranga Canvas
Covering NZ since 1953

SKIPPER
TRANSPORT PARTS

A division of AMCAP

anc
DISTRIBUTION

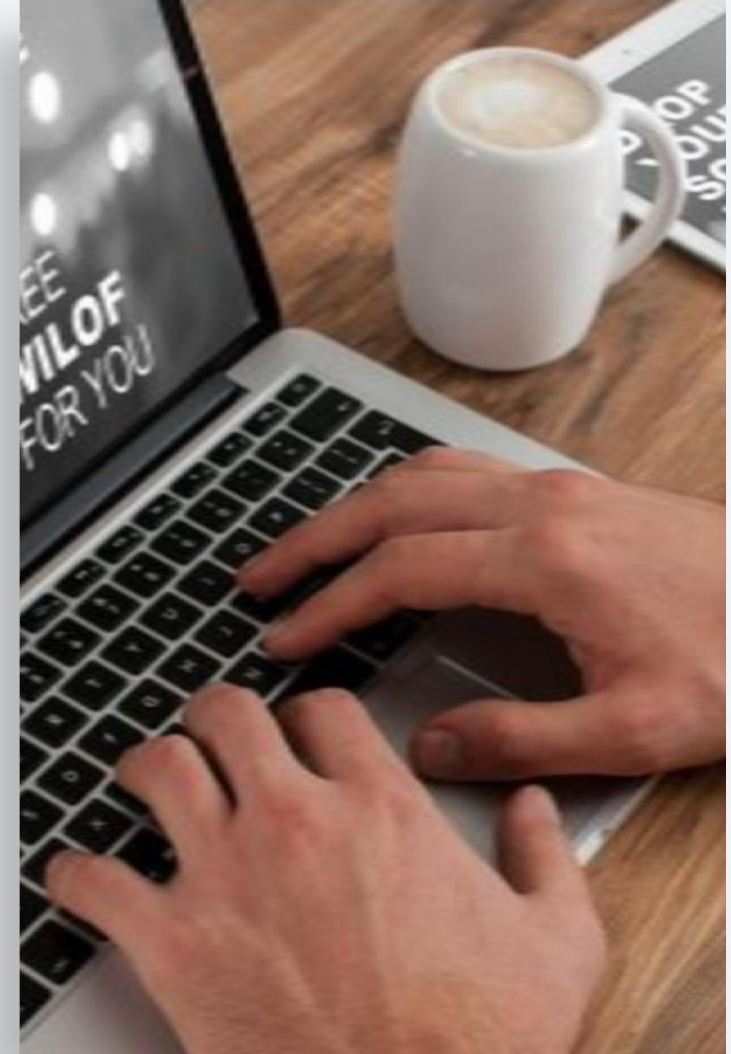
HOBSON
ENGINEERING

OUR PLANT PHOTOS



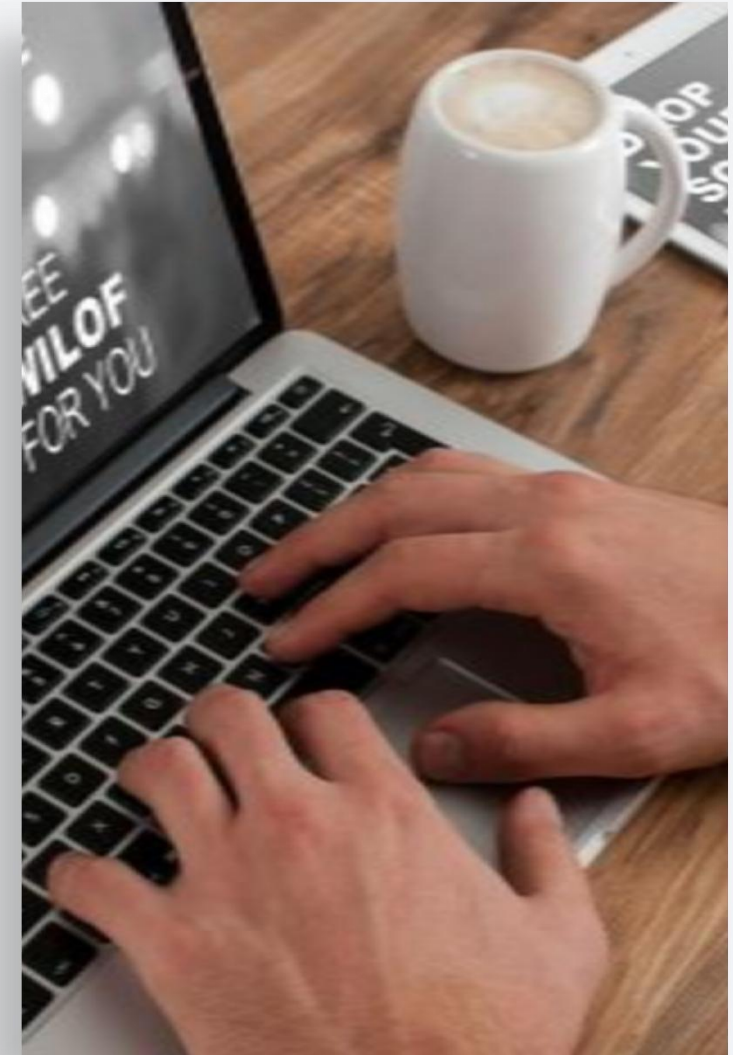
OUR PRODUCT TEST

- Breaking Strength Test
- Hardness Test
- Material Analysis
- Salt Spray Test
- Drop Test
- Hand Puller Test
- Elogation Test




MANUFACTURING SUMMARY

- 1,200,000 sq. ft.(120,000 sq metre) factory
- 1100 employees
- 50 Dedicated QC staff
- 45 Dedicated R & D staff
- ISO-9001 & ISO-14001 certified
- Fully integrated from drawing to finishing
- Primary materials wire, metal, tubing & plastic
- 5 plants include forging, stamping, plastic injection, rubber, zinc and chrome plating





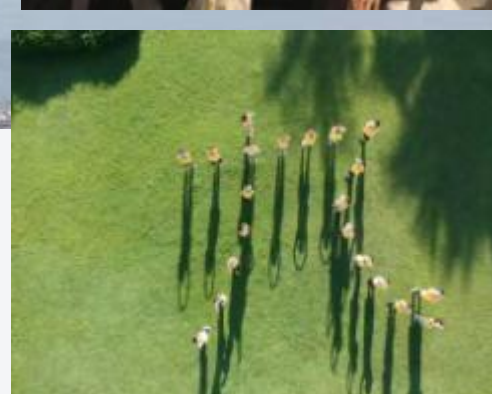
Ethics & Environmental Standards

- Jiulong is committed to providing a safe work environment for all employees.
 - Our products are produced in a socially & ethically responsible manner
 - Jiulong understands that this is a journey and not a destination. We are committed to continual improvement
- 

OUR SALES TEAM



OUR SALES TEAM





OUR ADVANTAGES

- Our holding factories include forging, stamping; punching; welding, galvanization, zinc/aluminum injection; plastic injection and rubber; weaving and stitching; package
- most of our employees have factory working experience, very familiar with products.
- Go aboard to exhibition and visiting customer every year, very focus customer requirement
- Our team is very passion and energy, average age is 26 years old
- Good education, learning ability, average education is university bachelor degree
- All of us have a same dreaming, to make the job as career, wish our production can be more and more popular , people will feel more safety and happiness from using our product
- We trust each other, we trust our team, we trust our customer, we trust partnership

TARGETS IN 5 YEARS

A donut chart with a dark blue outer ring and a white inner circle. The number '1' is centered in the white circle. The blue ring represents approximately 75% of the total.

1

SALES INCREASE FROM
\$100MILLION TO
\$150MILLION IN NEXT 5
YEARS

A donut chart with a dark blue outer ring and a white inner circle. The number '3' is centered in the white circle. The blue ring represents approximately 30% of the total.

3

Employee income gap more
than 10 times, twice the
income than the regular
average income

A donut chart with a dark blue outer ring and a white inner circle. The number '2' is centered in the white circle. The blue ring represents approximately 75% of the total.

2

Increase the No. of customer
to 200 all over the world in
2025, **15%** is from domestic
sales

A donut chart with a dark blue outer ring and a white inner circle. The number '4' is centered in the white circle. The blue ring represents approximately 20% of the total.

4

Build famous and knowledge
brand in lifting and lashing
business. Domestic and
International together



THANK YOU

**BE WITH US, BE WITH SAFETY!
WE ARE ON THE WAY!**